

DRAFT TABLE OF CONTENTS

WEPA Outlook on Water Environmental Management 2018



Natural-based wastewater treatment system in Bandung City, Indonesia. Copyright @Bao

WEPA Secretariat
Institute for Global Environmental Strategies (IGES)

Email: contact@wepa-db.net

IGES
Institute for Global
Environmental Strategies

Chapter 1.

Outlook on Water Environmental Management in WEPA Countries

-Challenges of Water Environmental Management in the Asian Region for Achievement of SDGs –

1.1 Water Environmental Management in WEPA countries

1.2 Monitoring of Water Environment

1.3 Wastewater Management

1.3.1 Domestic

1.3.2 Industrial

1.4 SDGs related to Water Environment

1.4.1 Current status

1.4.2 Challenges and Opportunities to Achieve SDGs

2

Chapter 2.

Country Profiles of Water Environmental Management in WEPA countries

13 WEPA Partner countries

Each country profile includes the following information:

1. Country Information
2. Major Water Bodies
3. State of Water Resources
4. State of Water Quality
5. Frameworks for Water Environmental Management
6. Recent Development of Water Quality Management
7. Existing and Future Challenges

Appendix


Selected social, economic and water related indicators in WEPA partner countries

References

3

Chapter 1.

Outlook on Water Environmental management in WEPA countries



1.1 Water Environmental Management in WEPA countries

An overview of legal frameworks and regulations/standards concerning on water environmental management across the WEPA countries (e.g. updated environmental protection law/act, ambient water quality standards, classifications of water bodies.

→ Inputs from WEPA focal points regarding the most updated data (2016 or 2017) are needed.

Chapter 1.

Outlook on Water Environmental management in WEPA countries

1.2 Monitoring of Water Environment

Description of monitoring system for Ambient Water Quality in WEPA countries.

Updated information from each WEPA partner country includes:

- No. of monitoring stations across the country,
- Frequency of monitoring, and monitoring year
- Monitoring indicators
- Responsible institutions
- Evaluation methods for monitoring results
- Status of ambient water quality in major rivers, lakes and marine waters

(published data/figures)

→ Inputs from WEPA focal points regarding the most updated data 5

(2016 or 2017) are needed.

Chapter 1.

Outlook on Water Environmental management in WEPA countries

1.3 Wastewater Management (both domestic and industrial)

Comparative status regarding domestic and industrial wastewater management in WEPA countries.

Updated information from each WEPA partner country includes:

- Changes in sectoral water withdrawal in WEPA country (domestic, industry and agriculture) and recorded year.
- Distribution of pollution sources by sector
- Brief explanation of current status/issues concerning on wastewater treatment
- Updated law, regulations, effluent standards and monitoring results.
- Remaining challenges need to be solved

**→ Inputs from WEPA focal points regarding the most updated data
(2016 or 2017) are needed.**

6

Chapter 1.

Outlook on Water Environmental management in WEPA countries

1.4 SDGs related to Water Environment

- ✓ An overview of WEPA countries' readiness for the implementation of the 2030 Agenda for Sustainable Development, especially focusing on the implementation of Sustainable Development Goal 6 on water and sanitation (SDG 6) (e.g. National Action Plan on the Implementation SDGs, responsibility assignments to relevant Ministries, etc..).
- ✓ Identify the common challenges and opportunities for WEPA countries in achieving all the targets in SDG 6, especially target 6.3 on water quality and wastewater

→ Inputs from WEPA focal points are needed.

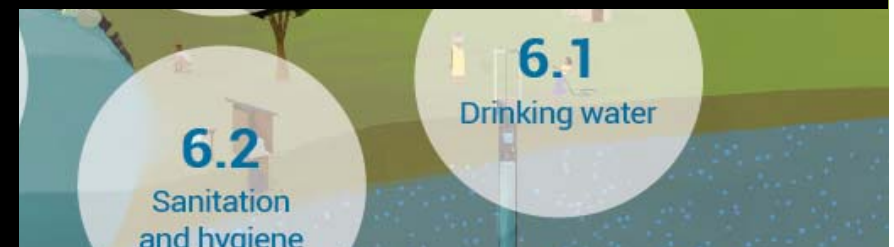
→ Need your recommendation to appropriate contact person for SDGs

implementation in your country

SDG 6



Water and
Sanitation in the
MDGs



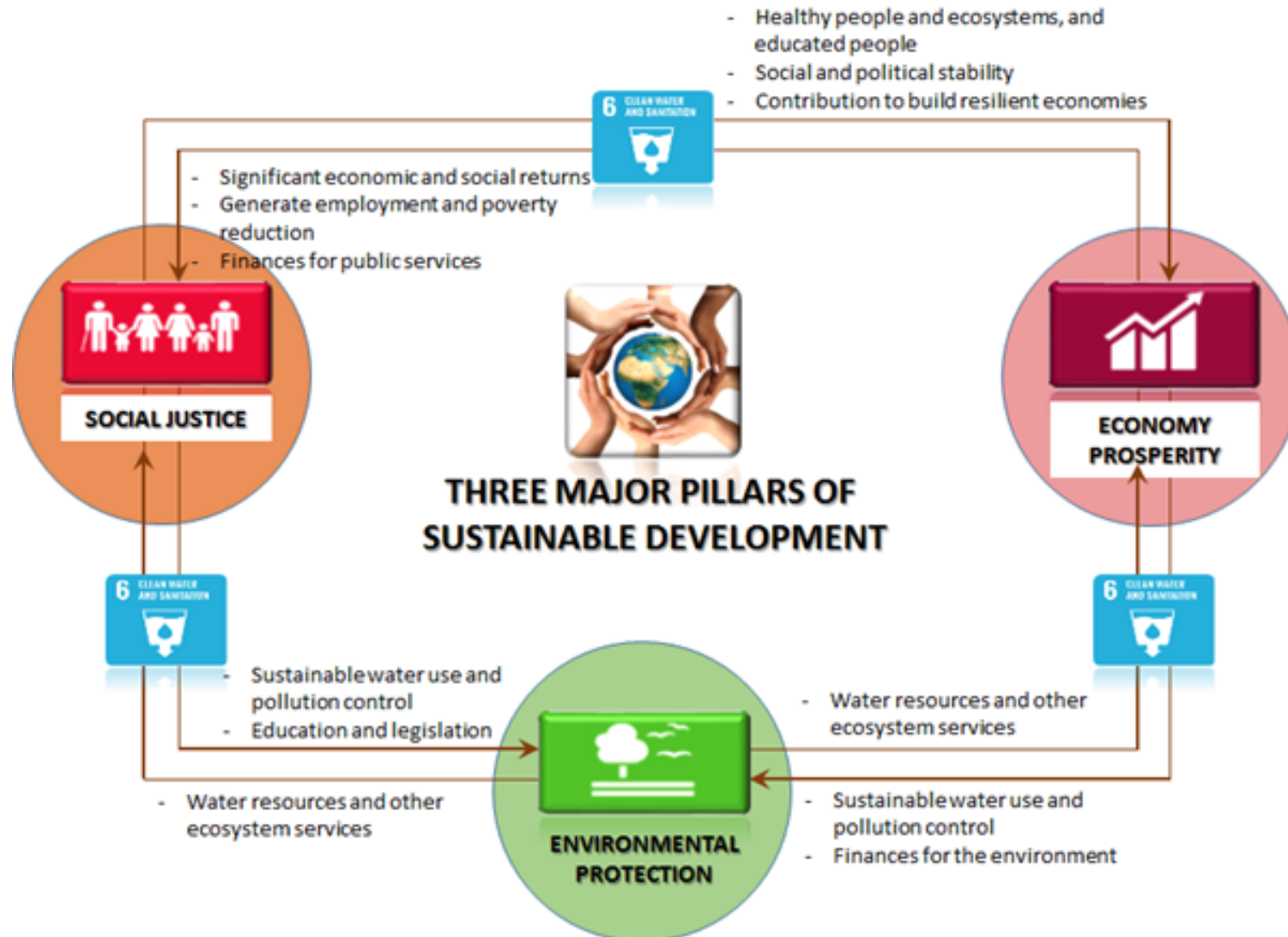


SDG 6

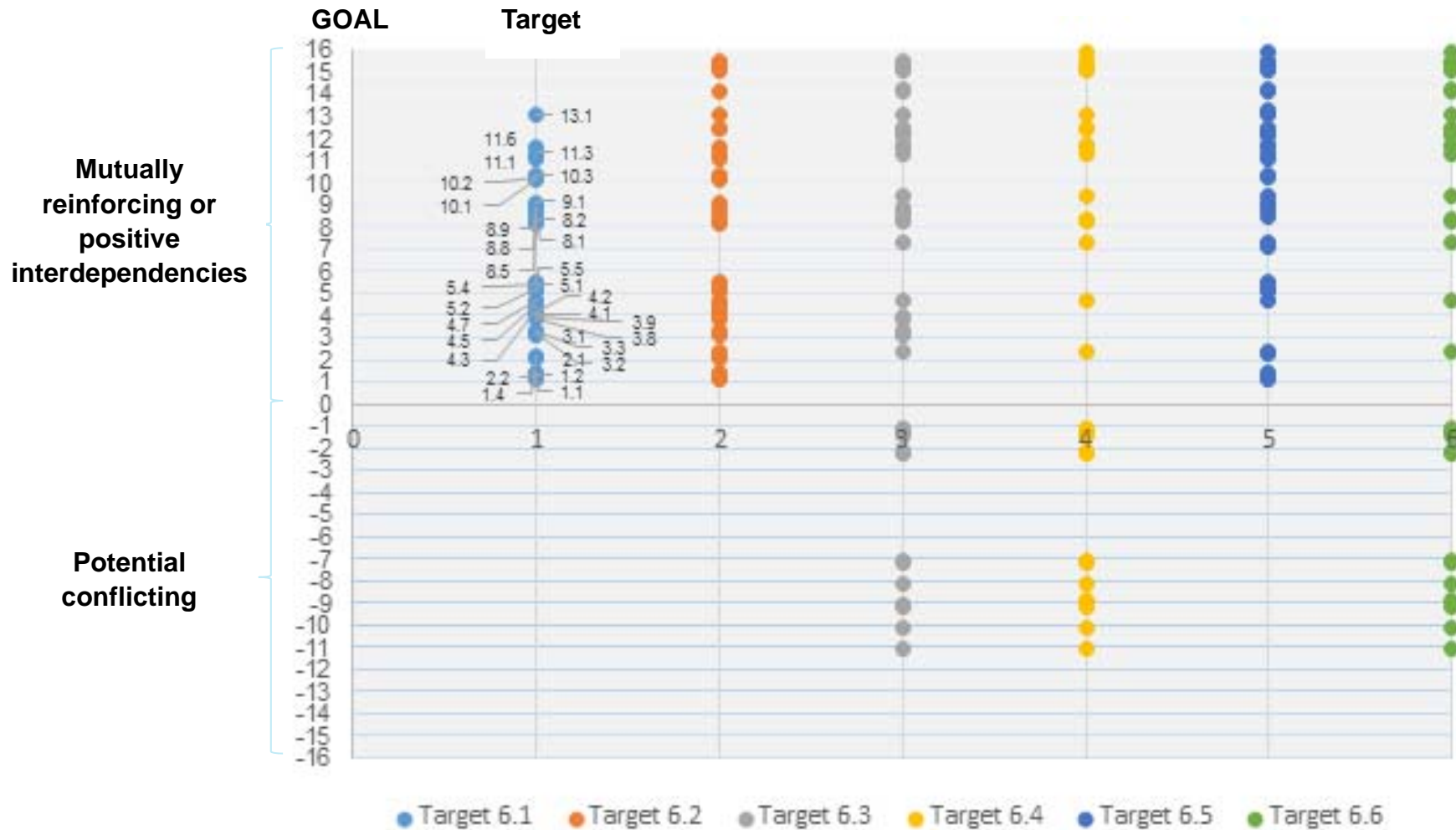
The Water Cycle in the Sustainable Development Goals



Contributions of SDG 6 to major pillars of Sustainable Development



Type and nature of interlinkages between water targets and other SDGs' targets



Note: Numbers showed on the x-axis indicate target 6.1 (1) ...target 6.6 (6). Numbers showed on the y-axis indicate goal 1 (1), goal 2 (2)...., while negative value indicate that these targets may have some potential conflicts with relevant targets in SDG-6.

Chapter 2.

Country Profiles of Water Environmental Management in WEPA countries

13 WEPA Partner countries

Each country profile includes the following information:

1. Country Information
2. Major Water Bodies
3. State of Water Resources
4. State of Water Quality
5. Frameworks for Water Environmental Management
6. Recent Development of Water Quality Management
7. Existing and Future Challenges

Appendix

Selected social, economic and water related indicators in WEPA countries

References

→ Inputs from WEPA focal points regarding the most updated data (2016 or 2017) are needed.

THANK YOU VERY MUCH
FOR YOUR ATTENTION!



