

WEPA

Water Environment Partnership in Asia

www.wepa-db.net

WEPA Partner Countries

As of March 2015

Cambodia	Ministry of Environment	Nepal	Water and Energy Commission Secretariat
China	Ministry of Environmental Protection	Philippines	Environmental Management Bureau, Department of Environment and Natural Resources
Indonesia	Policy Research Center for Environment and Economy	Sri Lanka	Central Environmental Authority
Republic of Korea	Ministry of Environment and Forestry	Thailand	Pollution Control Department, Ministry of Natural Resources and Environment
Lao PDR	Ministry of Environment	Viet Nam	Ministry of Natural Resources and Environment Viet Nam Environment Administration
Malaysia	National Institute of Environmental Research	Japan	Ministry of the Environment
	Ministry of Natural Resources and Environment		
	National Hydraulic Research Institute of Malaysia		
	Ministry of Agriculture and Irrigation		

To raise well-being throughout Asia via catalyzing knowledge and action on the water environment



Ministry of the Environment, Japan
Water Environment Division, Environmental Management Bureau
1-2-2 Kasumigaseki, Chiyoda-ku, Tokyo, 100-8975, Japan
TEL: +81 3 3581 3351, FAX: +81 3 3593 1438, URL: <http://www.env.go.jp/en/>



[WEPA Secretariat]
Institute for Global Environmental Strategies (IGES)
Natural Resources and Ecosystem Services Area

2108-11 Kamiyamaguchi, Hayama, Kanagawa, 240-0115, Japan
TEL: +81 46 855 3700, FAX: +81 46 855 3709
E-mail: contact@wepa-db.net, URL: <http://www.iges.or.jp/>



Ministry of the Environment



Institute for
Global Environmental
Strategies

Water Environment Partnership in Asia [WEPA]

A sound water environment is the key element to securing access to safe water and a sound environment. However, many Asian countries suffer from serious water pollution and destruction of aquatic ecosystems, and the presence of a large information and knowledge gap concerning these problems has hindered sustainable development in Asia. This is why Ministry of Environment, Japan created WEPA. WEPA focuses on sharing knowledge and experience as well as developing capacity to create a better water environment. The partnership comprises 13 countries, and activities run on five-year cycles. The third phase started in April 2014.



To raise well-being throughout Asia via catalyzing knowledge and action on the water environment

How WEPA is operated?

Annual Meetings

These are participated in by all WEPA partner countries and hosted by one of them to discuss and provide suggestions regarding the overall direction and annual plans of WEPA activities.



Focal Points

These are the persons assigned by each WEPA partner country. They participate in annual meetings and provide advice as well as support for WEPA activities.

WEPA Secretariat

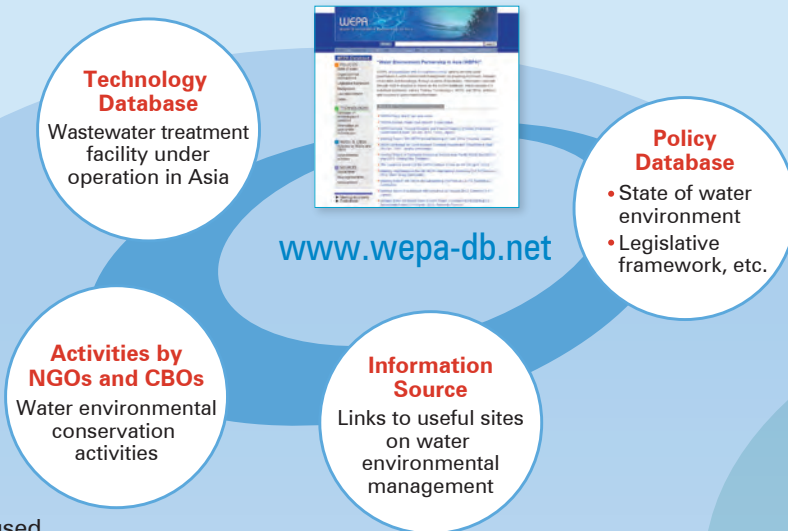
The Secretariat develops both overall and annual plans of activities for WEPA and implements them in close communication with the persons involved, especially the Focal Points.

WEPA Actions

1 Sharing knowledge and experience

WEPA facilitates knowledge and experience sharing among the partner countries and related stakeholders via workshops, symposiums, publications, such on how countries have been addressing water environmental problems and how to select and apply environmental technologies suitable to local situations. The WEPA database so that all those in the partnership can understand how water environment issues are being tackled.

● **WEPA database** is a web-based information platform covering information on water environmental policies, technologies, and community-based activities. It is also used to disseminate WEPA publications and meeting materials.



3 Building capacity to cope with key issues

WEPA contributes to capacity building on policy planning and implementation, mainly targeted at the policymakers of the partner countries, through activities such as WEPA workshops.

● **Group workshops** comprise focused discussion and knowledge-sharing in order to find solutions to specific issues (topics) shared by the partner countries in terms of needs, policy or interests. Participating countries are selected based on topics or content.



2 Supporting the search for solutions

Through meetings and dialogue between the partner countries WEPA identifies critical implementation barriers within water environmental policy and management, and also supports the efforts of partner countries to overcome them.

● **WEPA Action Programmes** are planned and implemented by the partner countries with support of WEPA. The programmes aim to solve specific water environmental issues and thereby improve the water environment in the partner countries. Three to four WEPA action programmes are to be conducted in the third phase. Practical lessons learnt from the programmes are shared with the partner countries.

● **Bilateral meetings** are occasionally organised for finding clue for solutions from intensive discussion between two countries – the one country which wants to address a specific issue and another to have experiences to address the issue.



Pilot Action Programme in Viet Nam: Research to apply cleaner production in pig farming



Outreach to wider stakeholders

WEPA distributes information and findings gained from its activities through the WEPA database, papers and publications. It also strives to network with other like-minded organizations and networks, in order to expand its reach.

● **WEPA Environmental Management Outlook** is published every three years, and includes basic information on the water environment and its management as well as key findings of WEPA activities.

