

INDONESIA COUNTRY UPDATE STATUS

By :

IIM IBRAHIM

Section Head of Water Pollution Control for Processing Industries



THE MINISTRY OF ENVIRONMENT AND FORESTRY, REPUBLIC OF INDONESIA

THE NEW REGULATION HAVE BEEN ISSUED RELATED TO THE WATER POLLUTION

1. The Minister of Environment and Forestry Decree No. 58 Year of 2016, concern of Leachate Quality Standard.
2. The Minister of Environment and Forestry Decree No. 68 Year of 2016, concern of Domestic Waste Water Standard.

THE REGULATION UNDER REVISING

1. Revising of The Minister of Environment Decree No. 5 Year of 2014, concern of Various Industries Waste Water Standard.
2. Revising of Government Regulation No.82 Year of 2001, concern of Water Quality Management and Water Pollution Control.

THE REGULATION UNDER FORMULATING & FINISHING

- Formulating Ministerial Regulation on Automatic and Continue Monitoring System for Water Quality and Waste Water Treatment Plant.
- Finishing Ministerial Regulation on Total Maximum Allowable Load and Waste Load Allocation.
- Finishing Guideline on Waste Water Reuse

MAIN OBJECTIVE

MID-TERM DEVELOPMENT PLAN 2015-2019

- Environment : To Improve environmental quality and sustainable development
- Main Target of Environmental Protection and Managament :

Indicator	Baseline 2014	Target 2019
• Environmental Quality Index	63,0-63,0	66,5-68,5
• Green House Gas Emission Reduction	15,5%	26%

POLICY DIRECTION FOR WATER SECURITY

1. To Ensure the fullfilment of need and water quality insurance for people daily life
2. To meet water need for social and productive economic
3. To increase people resilient in lowering the risk of water hazard force including climate change

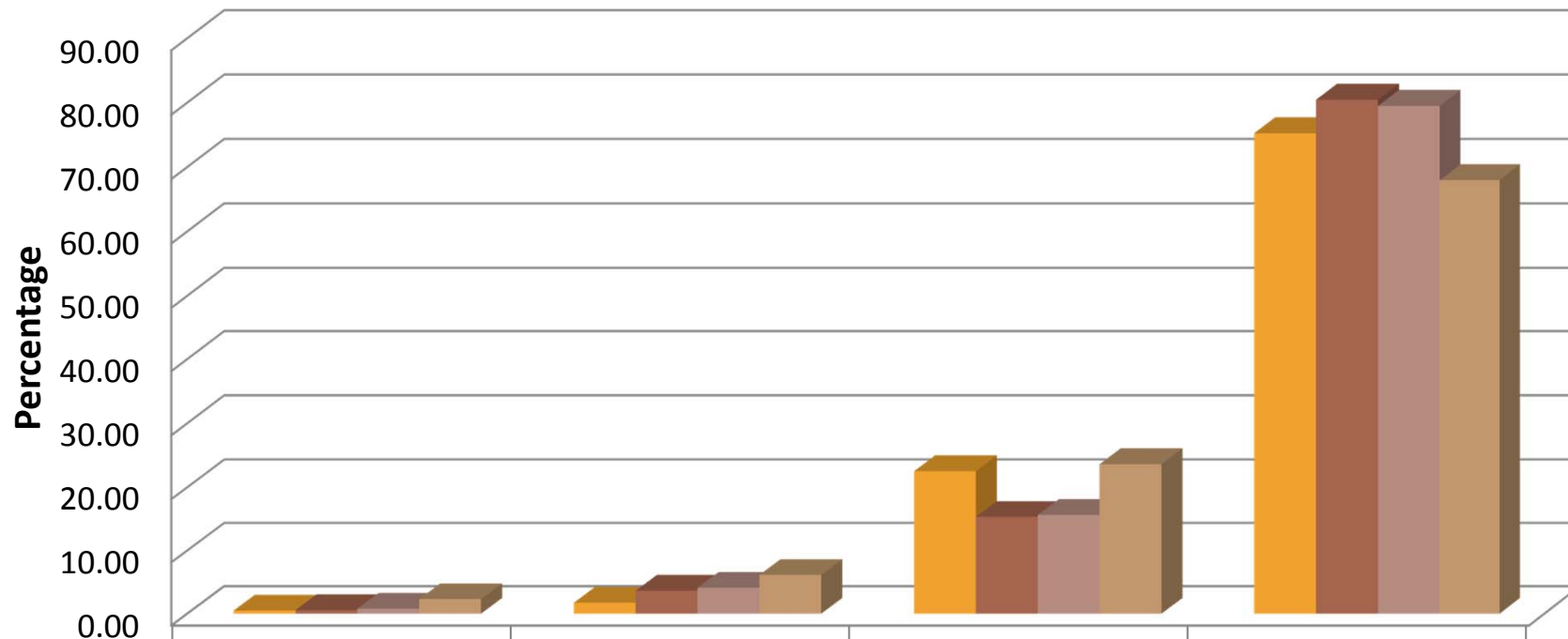
Indicator	Baseline 2014	Target 2019
National Capacity of Drinking water source	51,44 m ³ /sec	118,6m ³ /sec
Irigation availability from Dams	11	20

MID-TERM DEVELOPMENT PLAN 2015-2019

Acceleration of Infrastructure Development

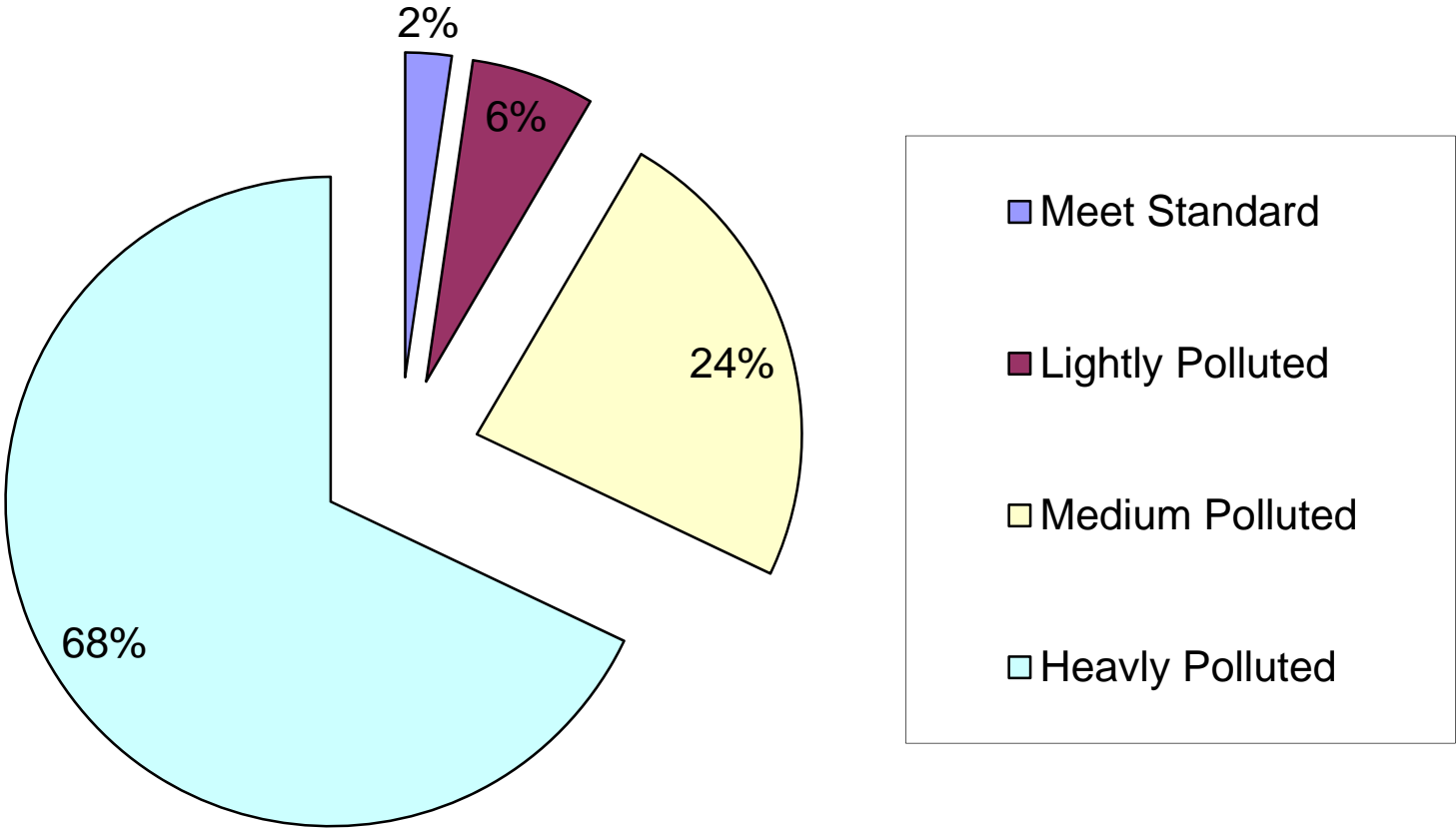
INDICATOR	BASELINE 2014	2019
Access of Appropriate Drinking Water	70	100
Appropriate Sanitation	60	100

TREND OF WATER QUALITY STATE IN INDONESIA IN 2012-2015



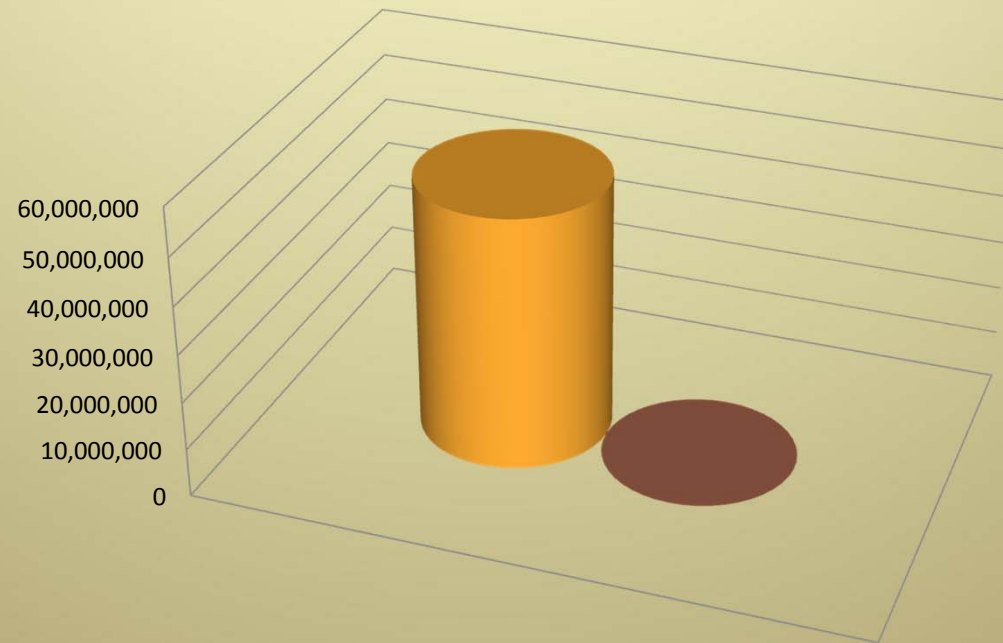
	Meet Standard	Lightly Polluted	Medium Polluted	Heavly Polluted
2012	0.49	1.73	22.52	75.26
2013	0.57	3.64	15.33	80.46
2014	0.78	4.10	15.63	79.49
2015	2.30	6.13	23.62	67.94

STATE OF WATER QUALITY IN INDONESIA IN 2015



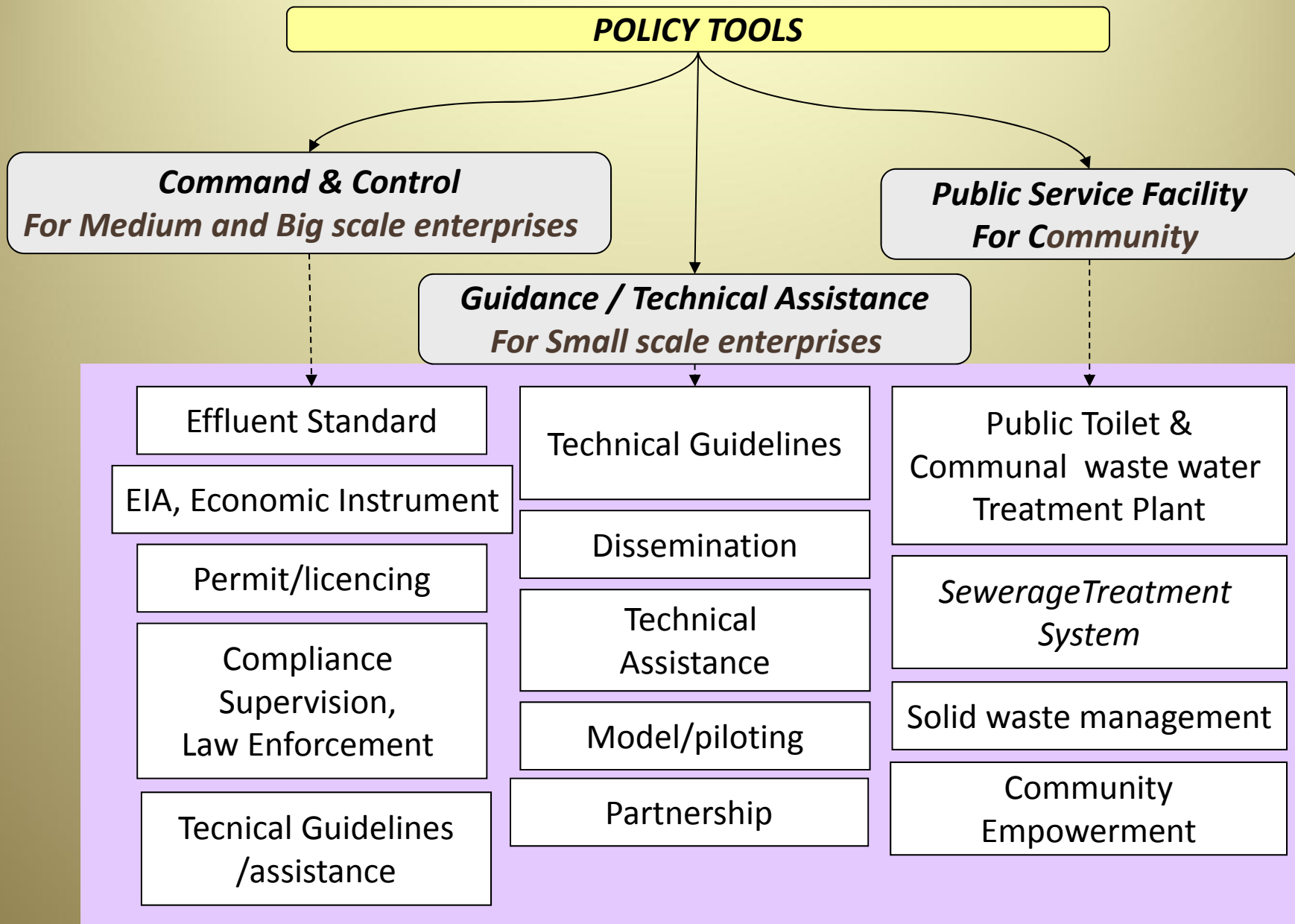
Catagory of Enterprises, (National Statistic 2012)

Catagory of Enterprises



- Employment= 97,3%
- PDB = 37,81%
- Water Pollution=2,3 millions ton

	Number
■ Micro and Small Enterprises	52,723,470
■ Medium and Large Company	45,810



PILOT PROJECT FOR DOMESTIC SOURCE POLLUTION CONTROL

Year	Number of WWTP	Capacity (person)	Pollution load Reduction (ton BOD/year)	Generated Biogas (m3/day)	LPG-equal (kg/day)	LOCATION (WATERSHED)
2010	3	8756	115.72	69.99	32.21	Barito - Martapura
2011	3	1460	19.30	11.67	5.37	Musi
2012	4	5046	66.69	40.34	18.56	Barito, Bengawan Solo, Ciliwung
2013	4	800	10.57	6.39	2.94	Ciliwung, Musi, Lumajang, Semarang
2014	3	1643	18,7	13,34	6,05	Brantas, Bengawan Solo and Barito
2015	4	1500	19,83	47,96	5,51	Citarum, Ciliwung, Brantas

PILOT PROJECT FOR SMALL MEDIUM SCALED ENTERPRISES POLLUTION CONTROL

Year	SMEs Type of Pollution Control		
	Bio Digester for Tofu Waste Water	Bio Digester for Livestock Waste Treatment	WWTP for Batik
2011	3	581	
2012	2	22	1
2013	4	74	1
2014		10	1
2015	1	10	1

WASTE TO ENERGY PROGRAM

Type of Industry	Estimated Production (Ton)	Pollution Load Reduction (Ton COD/day)	GHG Reduction (Ton CO2 e/day)	Generated Electricity (MW)
Palm Oil Industry	31.5 million	17.86 million	93.55 million	2.55 million
Cassava Starch Industry (Lampung Province)	26.54	8,758	45,984	439

THANK YOU VERY MUCH