

***Is the SEEA-Water a step forward  
in meeting the demand for  
integration information needed for  
water policy and management?***

Mitsumasa Okada, Ph.D.

Chair, Advisory committee for WEPA, Ministry of Environment, Japan  
Professor, Department of Chemical Engineering, Hiroshima University

***Yes! Integration of data such as SEEA-Water is  
useful and should be promoted for better water  
policy and management.***

**In terms of water quality data, however, ....**

- Monitoring of water quality data should be evaluated based on the regulatory framework such as water environmental standards and effluent standards.
- Each country has different policy and framework.



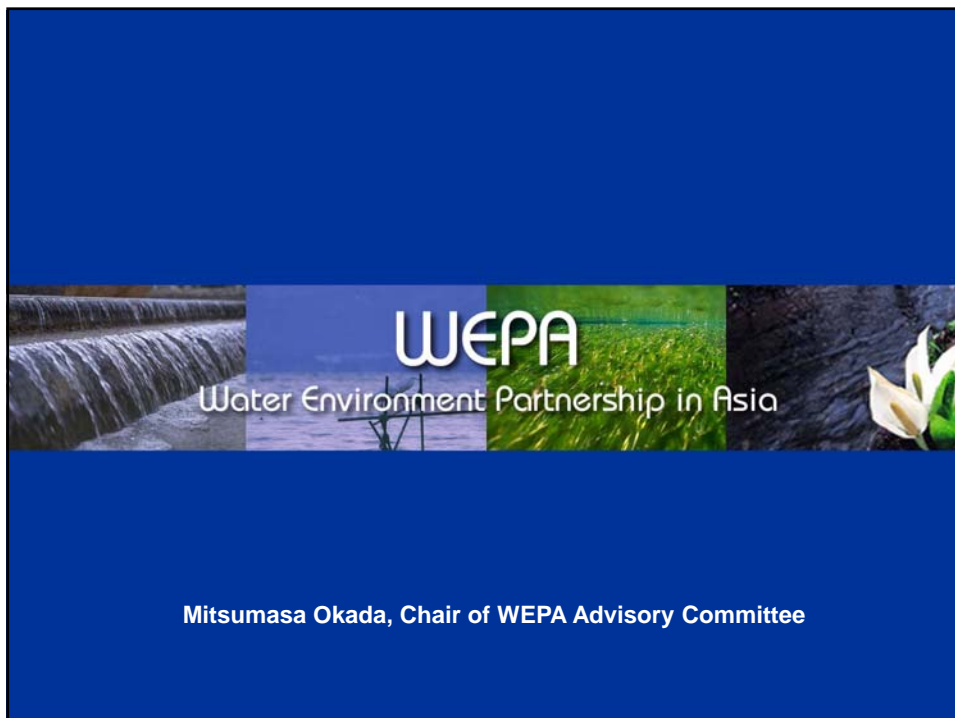
- **Monitoring data should be presented in the database together with information of regulatory framework.**
- **Difference in policies should be integrated into database.**

*Experiences in WEPA project*

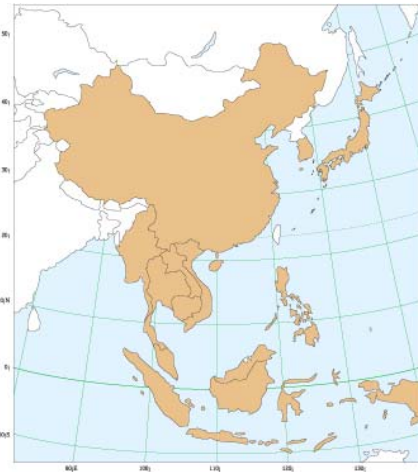
## **Everybody understand water quantity, but how about quality?**

- **Why do we have water quality monitoring data?**
  - *Someone go to monitoring*
- **Why go to monitoring?**
  - *Want to know the quality of water*
- **How to know/evaluate the quality of water?**
  - *Based on appropriate parameters and criteria/standard?*
- **How to define criteria/standard?**
  - *Based on our water use, water environment to be maintained/restored,  
..... **But different among countries and regions!***

**Water quality data, parameters and values, is dependent on criteria/standard, i.e. regulatory framework**



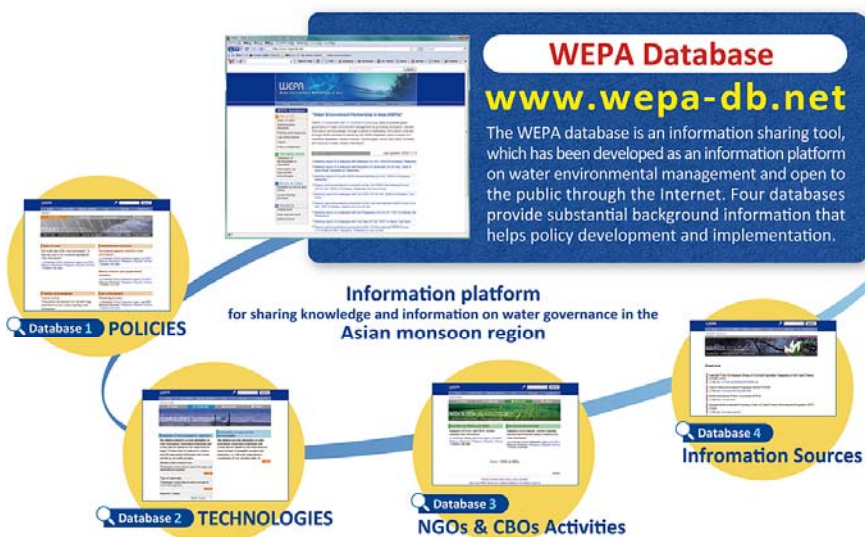
## Water Environment Partnership in Asia (WEPA)



- Initiative of Ministry of the Environment, Japan
- Conducted under the partnership of 11 Asian countries
- Aiming to strengthen governance and management capabilities on the water environment through development of database and the human resource development.
- Primary target users: Government officials and aid-agency staff

5

## WEPA Database - Regional Information Platform



## ***WEPA experiences in data collection***

Unless data users (policy makers) do not understand why data collection is necessary and also how data is to be translated in policy making, it is difficult to promote collection and utilization of data.

→Capacity building of users (policy makers) to understand data/information is necessary

Gathering data and integrating gathered data under the common scheme by policy makers themselves



Policy makers became aware of

- why the information/data should be collected,
- how information/data should be understood and utilized,
- what information/data is lacking or insufficient in their own country, and
- ***how their policies should be improved***

## **Findings through WEPA experiences**

- ✓ **Less attention to water quality than water quantity in integrated water resource management which is now promoted in each country**
- ✓ **Inconsistency between monitored parameters/data and regulatory framework such as water environment quality standards (Monitored data cannot be utilized for evaluation of water environment management)**
- ✓ **Less awareness/knowledge on how to translate quality data into policies (To utilize collected data in policy making, capacity building to understand/analyze data is necessary)**
- ✓ **Lack of data/information and policy improvement due to insufficient finance and human resource**

## Challenge in WEPA

### *Better information collection and utilization*

- ✓ **Capacity development** of policy makers will be strengthened for better understanding of data/information available.
- ✓ **Utilization of data/information on quality and quantity in policy framework of integrated water environment management** will be considered through dialogues among WEPA countries.