

The top of the slide features a blue banner with a background image of water ripples and a shoreline with plants. The WEPA logo is positioned on the left side of the banner.

WEPA

Water Environment Partnership in Asia

Framing presentation (Background and the purpose of the workshop)

Noriaki Murase

Program Manager, WEPA Secretariat

Institute for Global Environmental Strategies (IGES)

Overviews of WEPA

- While the Asian economy has shown remarkable development, serious water pollution problems have been occurring in this region.
- In order to solve water environment problems in Asia and achieve sustainable development, it is essential to enhance information, knowledge and systems on water environment, and [improve water environment governance](#).
- At the Third World Water Forum (2003), the Ministry of Environment, Japan proposed a network of government officials in Asia (WEPA).

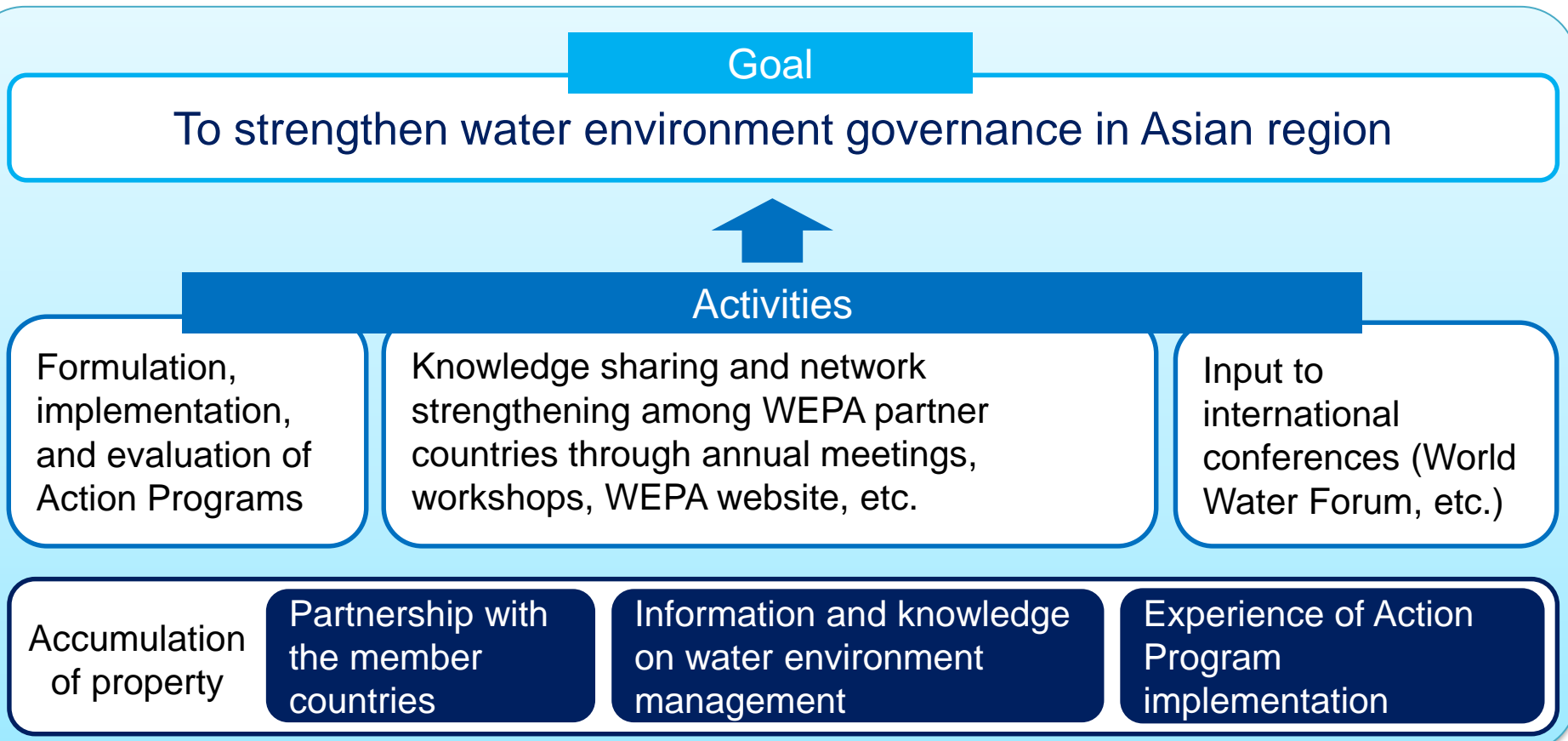
WEPA partner countries (13 countries)

1. Democratic Socialist Republic of Sri Lanka (Sri Lanka)
2. Federal Democratic Republic of Nepal (Nepal)
3. Japan (Japan)
4. Kingdom of Cambodia (Cambodia)
5. Kingdom of Thailand (Thailand)
6. Lao People's Democratic Republic (Lao PDR)
7. Malaysia (Malaysia)
8. People's Republic of China (China)
9. Republic of Indonesia (Indonesia)
10. Republic of Korea (Korea)
11. Republic of the Philippines (Philippines)
12. Socialist Republic of Viet Nam (Viet Nam)
13. Union of Myanmar (Myanmar)



Goal and activities

- Aim to contribute to improving the water environment through strengthening water environment governance in Asian region, by establishing a cooperative system among government officials involved in water environment management in the Asian region, and implementing initiatives such as collecting and disseminating information, developing human resources and capacity, and developing relevant systems in WEPA partner countries



The previous WEPA workshop

WEPA Workshop on Industrial Wastewater Management
in September 2017 in Jakarta, Indonesia

(1) Shared overview of industrial wastewater regulations

- The existing types of industrial wastewater quality standards and their outlines (basis for regulation, target industries, target pollutants)
- Industrial wastewater quality monitoring methods
- Challenges in monitoring
- The situation of compliance regarding industrial wastewater quality standards and industries which face challenges in compliance

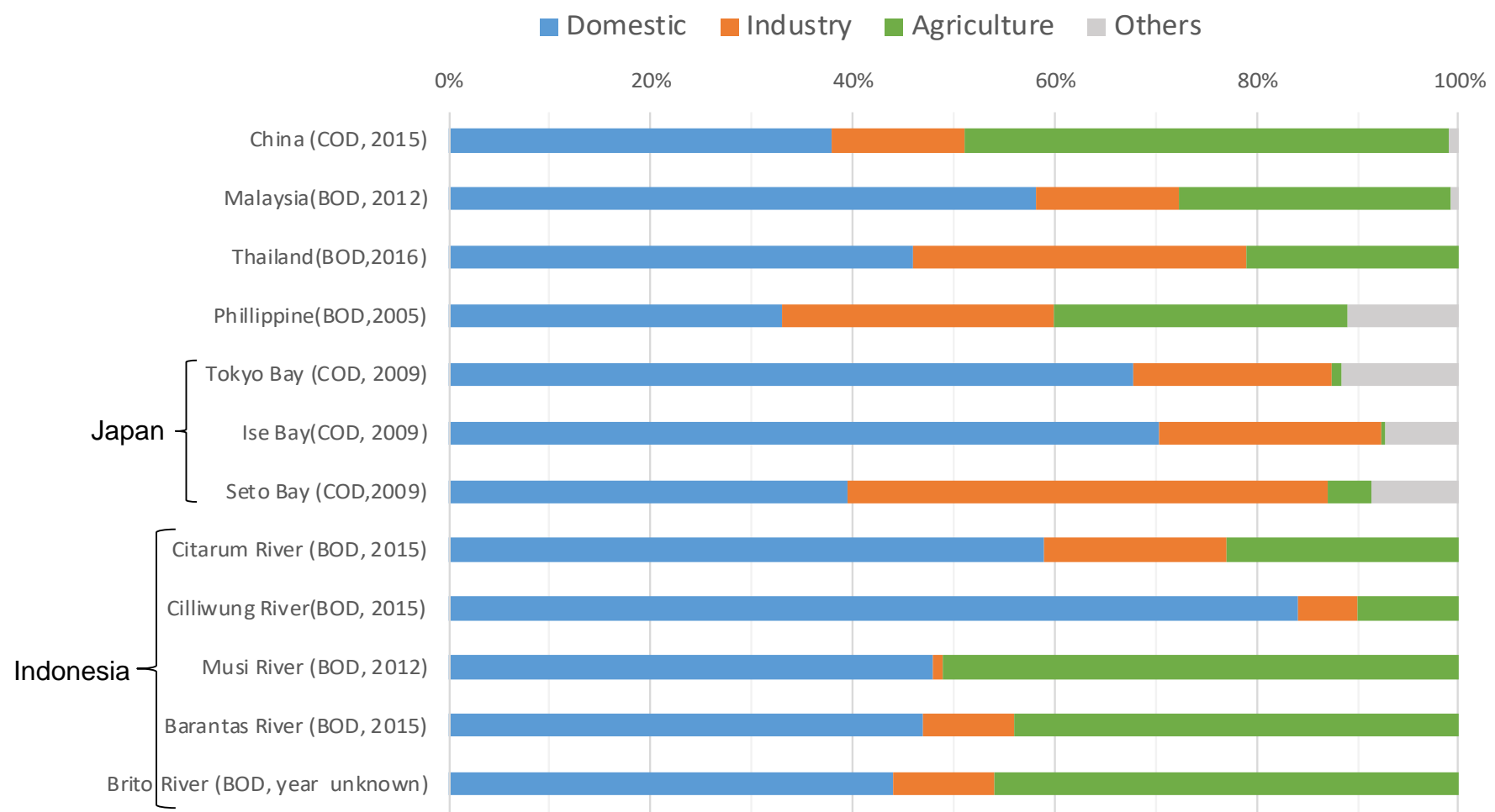
(2) Shared situation and challenges for the problematic industries and countermeasures

- Overview of the problematic industry and impact to the environment of wastewater emitted from the respective industry
- The reason for non-compliance of the respective industry and the problematic pollutant(s)
- Current mitigation measures and the problems therein
- Technologies and needs for addressing the challenges

Identified facts

Pollution source by sector in selected WEPA countries

■ Both domestic and industrial wastewater are the major pollution sources in the selected country,



(source: WEPA Outlook 2018, p.22)

Identified facts

Establishment of Effluent Standards in WEPA Countries

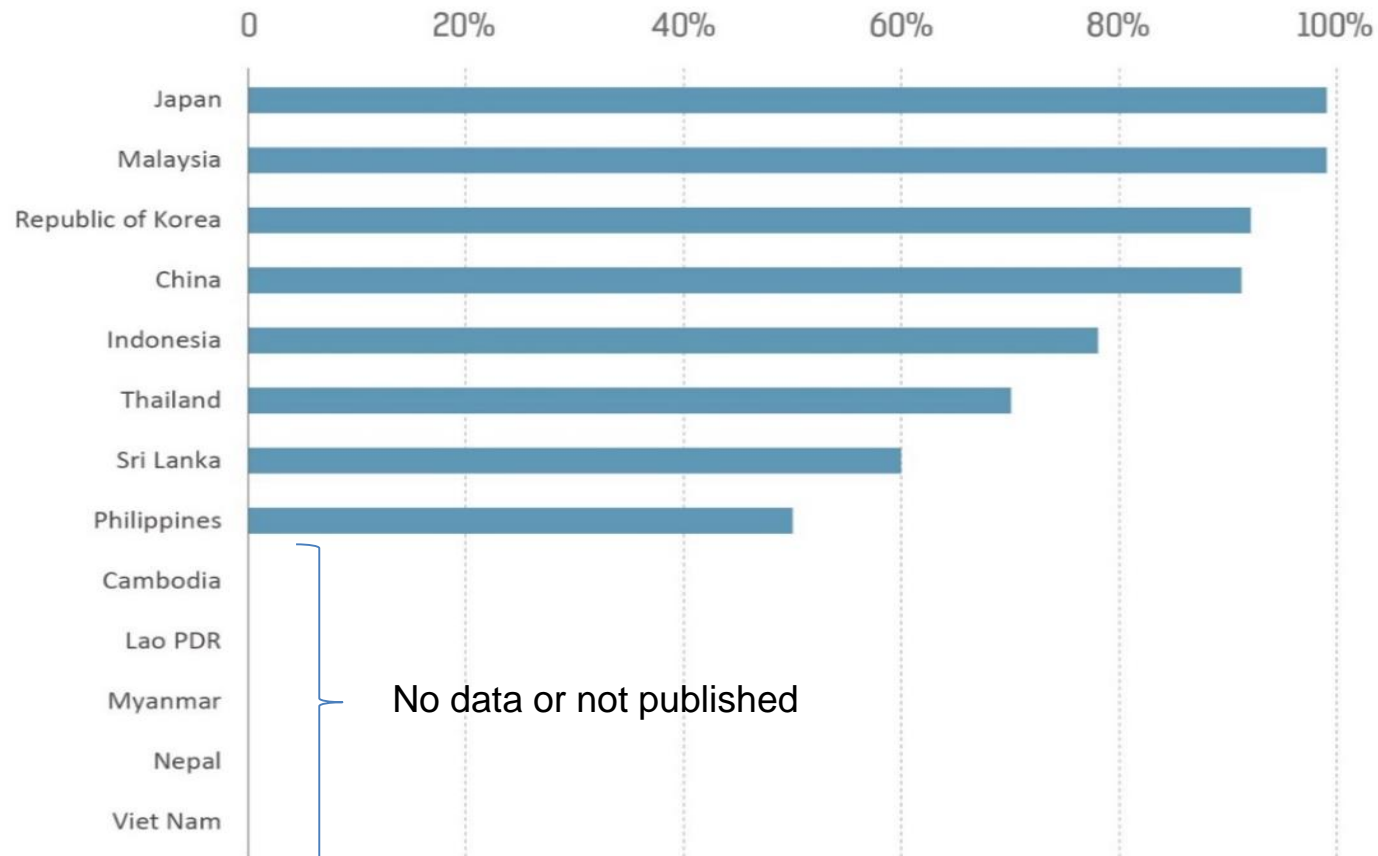
- Effluent standards are established in all WEPA countries except Myanmar,

	Domestic 	Industrial 
 Cambodia		
 China		
 Indonesia		
 Japan		
 Republic of Korea		
 Lao PDR		
 Malaysia		
 Myanmar	—	—
 Nepal		
 Philippines		
 Sri Lanka		
 Thailand		
 Viet Nam		

Identified facts

Compliance rate of industrial effluent standards

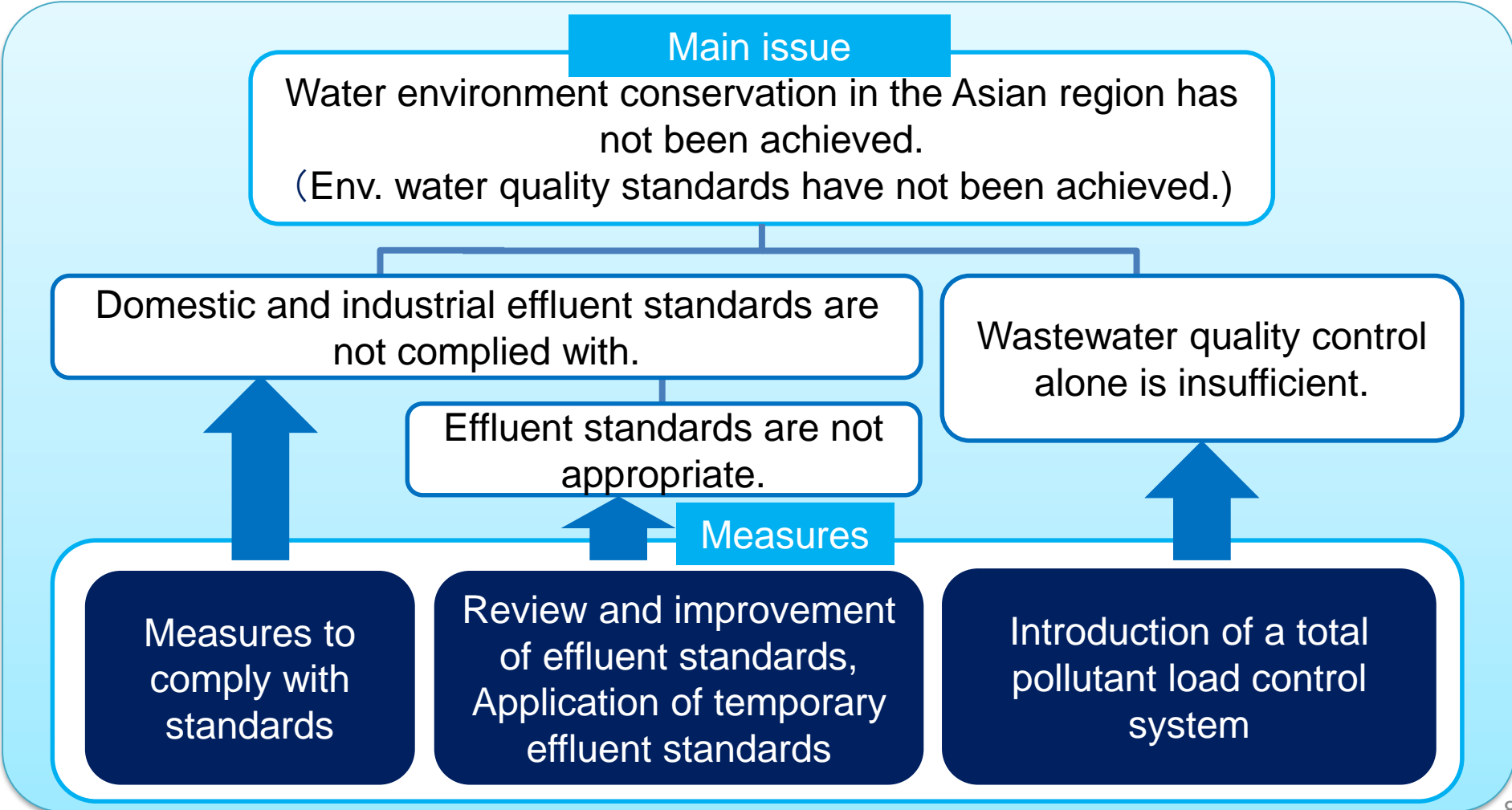
- There are big differences in the compliance rates between WEPA partner countries.
- In many countries, the compliance rate of industrial effluent standards is not high, and the compliance rate is not accurately recognized by government agencies.



(source: WEPA Outlook 2018, pp.28-29)

Issues and measures based on efforts up to the 3rd Phase

- There are two main reasons why water environment conservation in Asian region has not been achieved - one is that not only the effluent standards are not complied with, and the other is that wastewater quality control alone is insufficient.
- Measures need to be taken according to each factor.



Topic: Industrial Wastewater Management

Purpose:

To discuss necessary measures to improve water environment conservation in the WEPA partner countries based on the facts confirmed as a result of previous WEPA activities

- Pollution load control
- Wastewater quality control
- Wastewater treatment technology

Agenda of the WEPA workshop

Agenda

9:30 Keynote Presentation (1)

Effluent Regulation System under the Water Pollution Control Act

Prof. Emeritus Masaaki Hosomi, WEPA Advisory Board Member

10:10 Keynote Presentation (2)

Thai experience on industrial wastewater regulation

Dr. Chaiyo Juisiri, Director of Inland Water Section, Pollution Control Department, Ministry of Natural Resources and Environment

11:10 Presentations from WEPA Countries (1)

Recent efforts in industrial wastewater regulation (pollution load control)

- Malaysia
- Korea

13:30 Presentations from WEPA Countries (2)

Recent efforts in industrial wastewater regulation (wastewater quality control)

- Philippines

Agenda of the WEPA workshop

Agenda

14:00 Q&A and Discussion

15:15 Presentations on Industrial Wastewater Treatment Technology

- *Mr. Akihiko Toji, General Manager, International Engineering Section, Water Infrastructure Engineering Division, KOBELCO ECO-SOLUTIONS Co., Ltd.*
- *Mr. Chuchat Saitin, Managing Director, Amata Water Co., Ltd.*
- *Mr. Panumas Intarasotthi, General Manager of GEM Environmental Management, Co., Ltd.*

16:45 Comments from WEPA advisors

17:00 Closing

Discussion points on pollution load control

- What is the background for introducing total pollution load control system (in addition to the existing concentration-based effluent standard system)?
- What are the lessons learned from the specific cases implemented in WEPA countries?
- What are drivers and barriers for introduction and successful implementation of a total pollution load control system?

Discussion points on wastewater quality control

- What is the latest status of compliance with industrial effluent standards in your country?
- What are the main reasons for non-compliance with industrial effluent standards?

Overall discussion

- What measures and activities are needed to ensure a high ratio of compliance with industrial wastewater effluent standards?

Examples of measures required for complete compliance with regulations

- Clarification of roles and authorities of central and local governments
- Complete regulations for businesses (notification, measure and log pollution status of effluent, on-site inspections), penalties, order remedy, administrative directions, etc.
- Appropriate enforcement and operation of the effluent standards
 - Enforcement and application of more stringent effluent standards in cases, where national effluent standards and their scope are insufficient due to natural and social conditions
 - Application of temporary effluent standards when compliance with effluent standards is technically difficult
- Review of appropriateness of existing effluent standards and improvement
- Introduction of a total pollution load control system, when conventional water quality control measures through effluent standards alone is insufficient.

Thank you for your active participation.