



Water Environment Partnership in Asia:  
**The 12<sup>th</sup> WEPA Annual Meeting and  
International Symposium on Southeast Asian  
Water Environment (SEAW12)**  
28-30 November 2016 Hanoi, Viet Nam

# **Country Updates Lao PDR**

November 30, 2016 in Hanoi Vietnam

# Policy and Legislation

- Referring to Environmental Protection Law, Chapter 2: Pollution Control: Currently Pollution Control Department (PCD) within MONRE is developing and revise pollution control legislation such as:
  1. Vision 2030 and 10 Years Strategy (2016-2025) and Action Plan of National Pollution Control;
  2. National Pollution Control Decision;
  3. Waste Management Decision; and
  4. Revising National Environmental Standard Decision.

# Revising NESD

- **Surface Water Quality from 1 Class to 5 Class:**
  - 1. Class 1:** Extra Clean fresh surface water resources used for : (1) conservation not necessary pass through water treatment process require only ordinary process for pathogenic destruction (2) and ecosystem conservation where basic organisms can breed naturally
  - 2. Class 2:** Very clean fresh surface water resources used for : (1) consumption which requires ordinary water treatment process before use; (2) aquatic organism of conservation ; (3) fisheries and (4) recreation.
  - 3. Class 3:** Medium clean fresh surface water resources used for: (1) consumption, but passing through an ordinary treatment process before using; and (2) agriculture.
  - 4. Class 4:** Fairly clean fresh surface water resources used for : (1) consumption, but requires special water treatment process before using; and (2) industry.
  - 5. Class 5:** The sources which are not classification in class 1-4 and used for navigation.

Parameters	Class 1	Class 2	Class 3	Class 4	Class 5
DO (mg/L)	$\geq 7$	5-6.9	3-4.9	2.1-2.9	$\leq 2$
COD (mg/L)	$\leq 5$	5.1-7	7.1-10	10.1-11.9	$\geq 12$
NH4+ (mg/L)	$\leq 0.5$	0.6-1.5	1.6-2.8	2.9-3.9	$\leq 4$
NO3 (mg/L)	$\leq 2$	2.1-10	10.1-25	25.1-49.9	$\geq 50$
TP (mg/L)	$\leq 0.05$	0.06-0.2	0.3-0.5	0.6-0.9	$\geq 1$
PO4 (mg/L)	$< 0.1$	0.5	1	2	$< 2$
TSS (mg/L)	$\leq 10$	10,01-25	25,01-40	40,01-59,9	$\geq 60$
Conductivity (mS/cm)	$\leq 500$	501-1000	1001-2000	2001-3999	$\geq 4000$
pH	6.5-8.2	6.8-8.5	5.5-9.5	4.5-10	

# Institutional

- MONRE is revising the MANDATE, and some Dept also have been revised;
- For water quality inspection and monitoring:
  - PCD is compliance inspection with the end of the pipe;
  - ESIA is regular monitoring of project development;
  - NREI is researches and Lab service;
  - WRD is regular monitoring of surface and ground water quality monitoring in whole country.

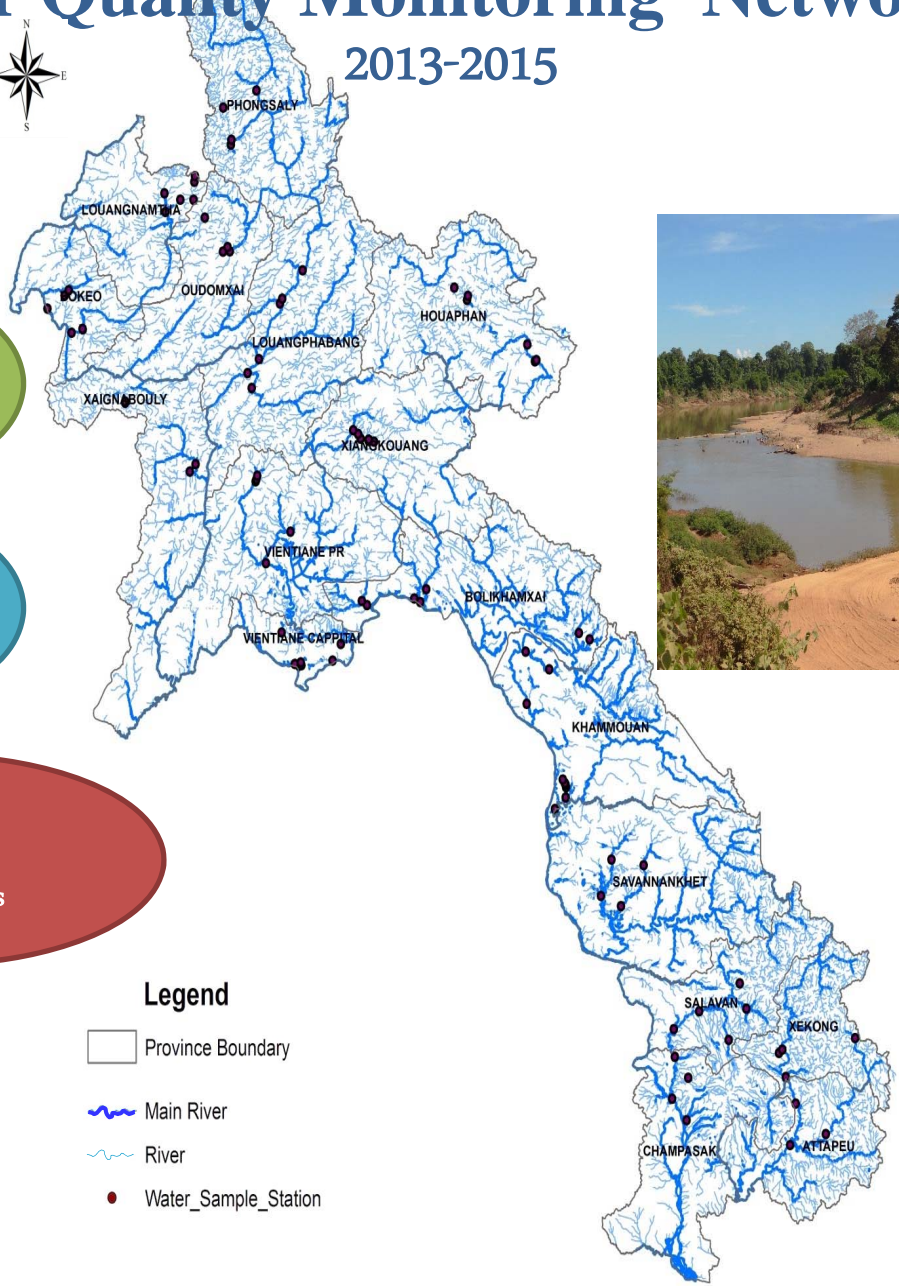
# Water Quality Monitoring Networking 2013-2015



**17 (+1)**  
Provinces

**93**  
Stations

**>30**  
Parameters



Thank You for your attention

